

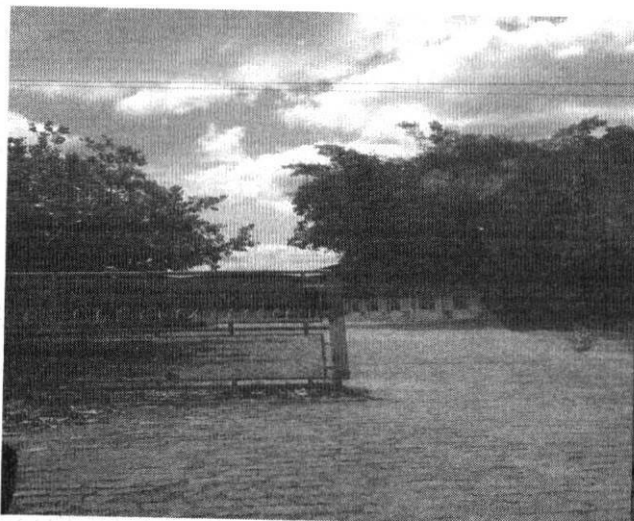


(GARAGEM -MORENO- ADOLFO FERREIRA)
(GARAGEM -MORENO- ADOLFO FERREIRA (MOTORISTA SALVINO))

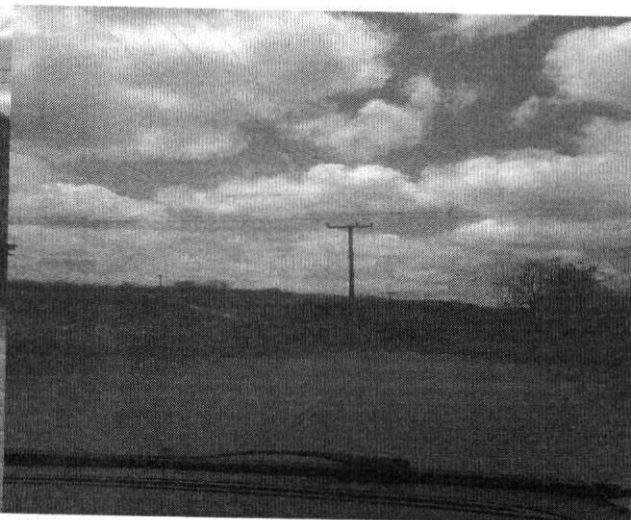
LATITUDE	LONGITUDE	NOME DA PARADA	DISTANCIA
-4.2157576	-38.7004906	INICIO DA ROTA	7,4 km
-4.1588857	-38.6823821	DESVIO	0,8 km
-4.1619093	-38.6768437	DESVIO	2,1 km
-4.1619043	-38.6616409	PARADA MORENOS	4,4 km
-4.147664	-38.676169	DESVIO	6,0 km
-4.1559093	-38.67889	PARADA	3,2 km
-4.1665417	-38.6921126	PARADA	3,7 km
-4.168043	-38.692785	DESVIO	1,5 km
-4.1595709	-38.7022131	PARADA	2,2 km
-4.174369	-38.6924249	EEIF RAIMUNDO ALVES	0,8 km
-4.1809979	-38.6936783	PARADA	1,8 km
-4.1962288	-38.6965439	PARADA	2,9 km
-4.2205115	-38.7041395	DESVIO	0,4 km
-4.22387	-38.7048094	ALUNO DO COLÉGIO ESTADUAL	0,5 km
-4.225474	-38.7085007	CEI MARIA BESSA RAMOS	0,2 km
-4.2247902	-38.7095191	EEF PE ANTÓNIO CRISTOMO DO VALE	3,2 km
-4.2219477	-38.7150524	FIM DA ROTA ESCOLA ESTADUAL ADOLFO FERREIRA DE SOUSA	1 m

VIAGENS 4 X DISTANCIA(KM): 41.1 Km DISTÂNCIA TOTAL(KM): 164.4 Km

INICIO DA ROTA



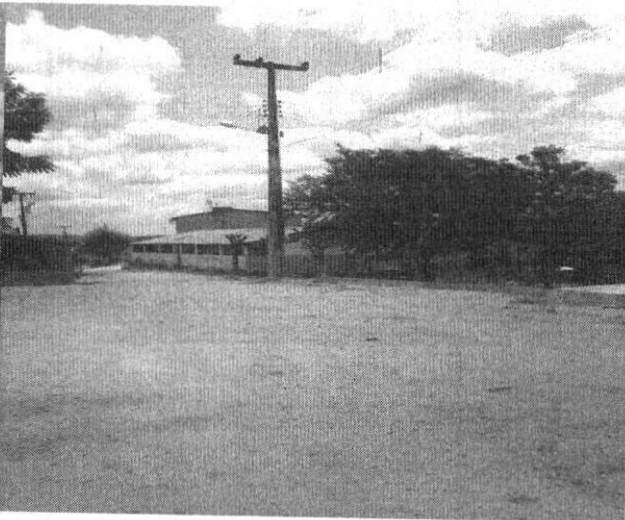
DESVIO



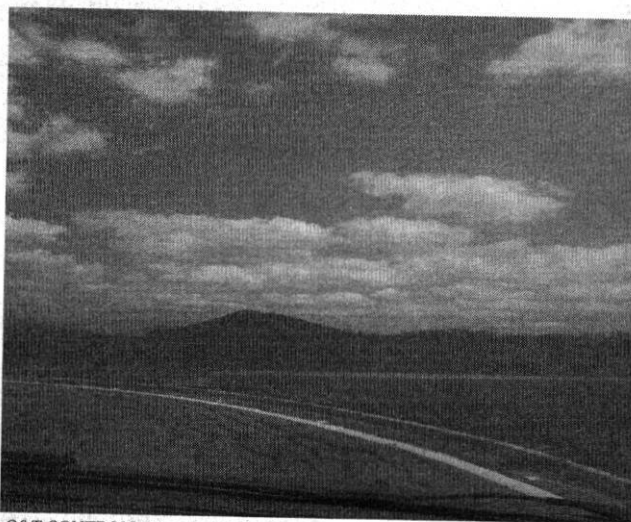
DESVIO



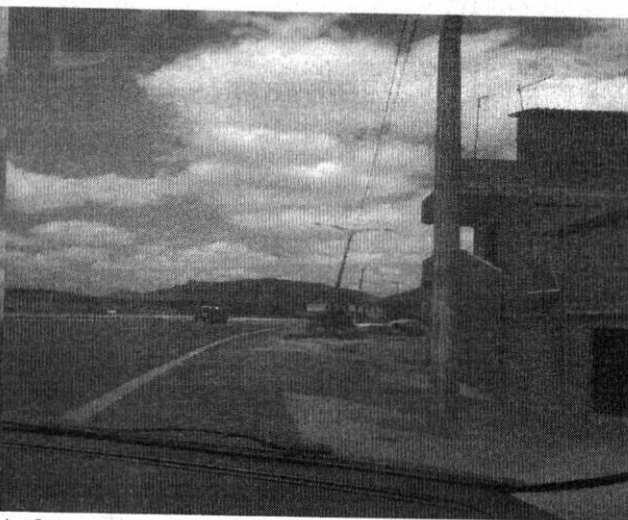
PARADA MORENOS



DESVIO

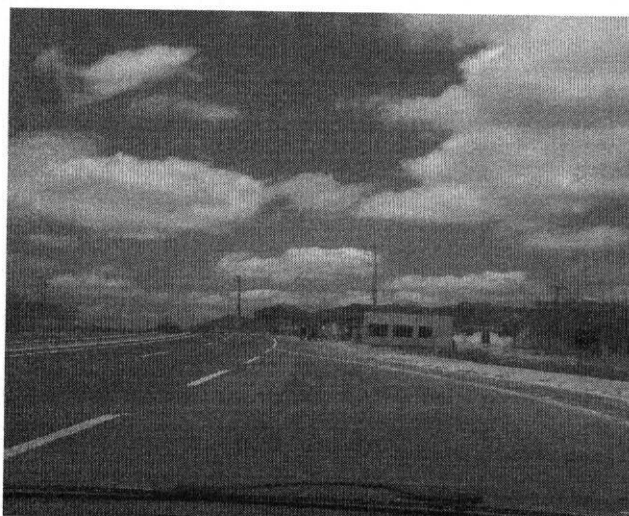


PARADA

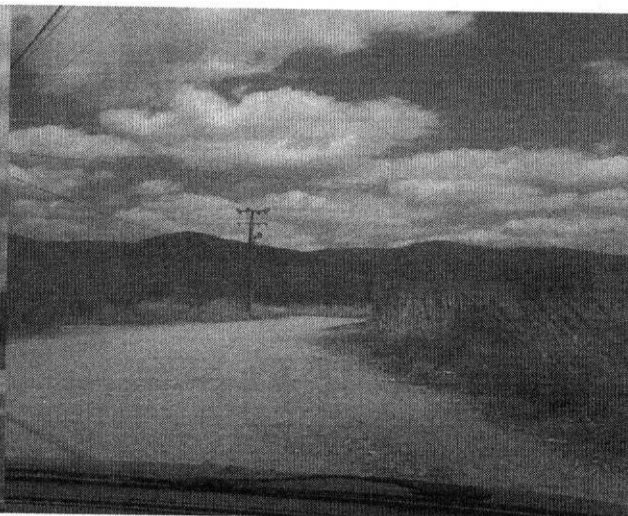


X

PARADA



DESVIO



PARADA



EEIF RAIMUNDO ALVES



PARADA



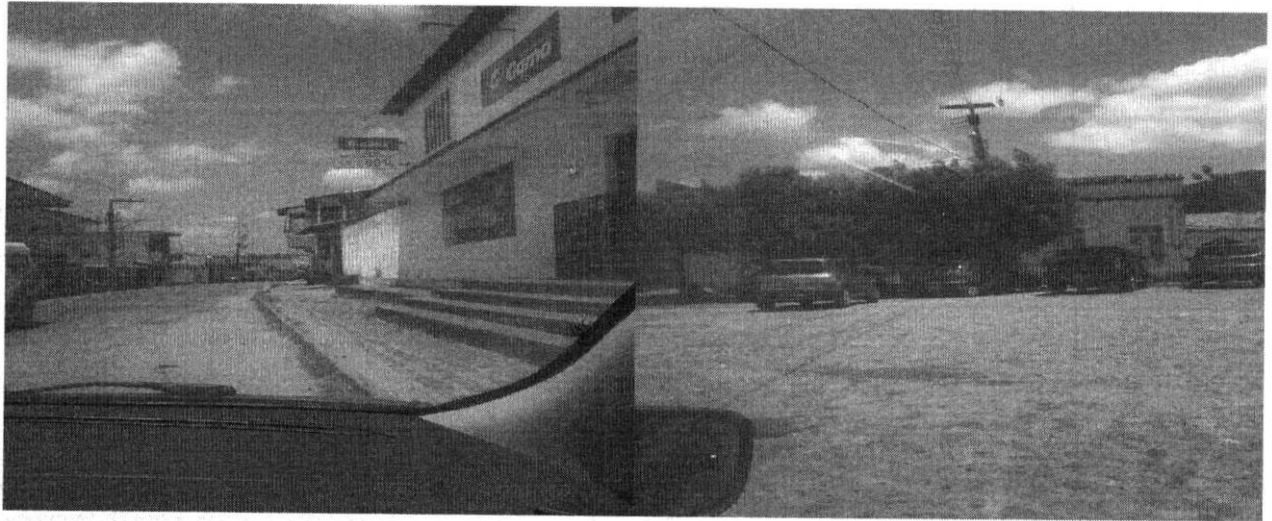
PARADA



X

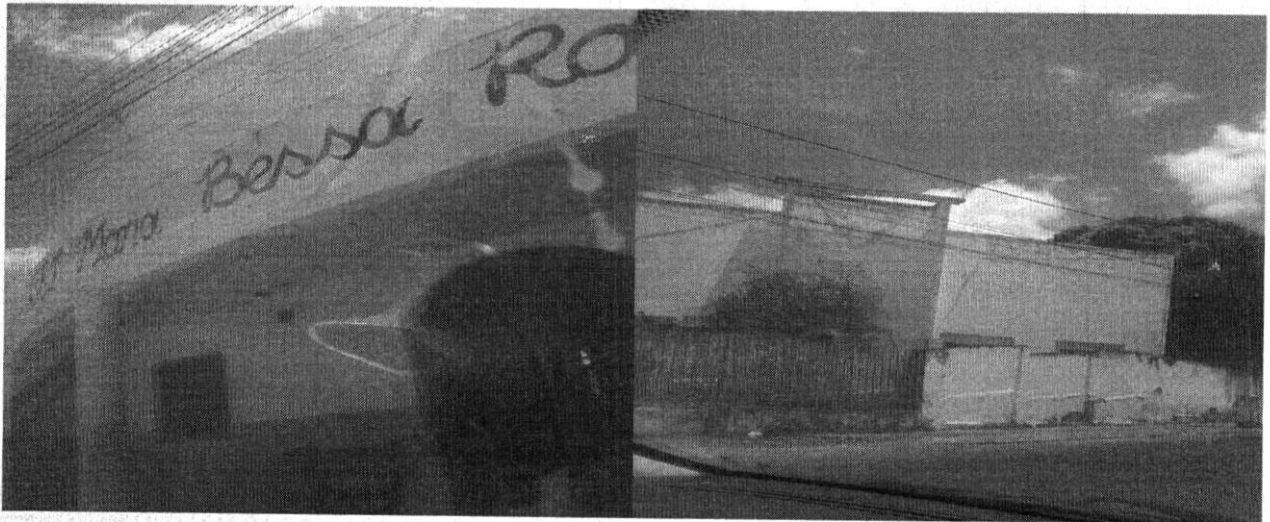
DESVIO

ALUNO DO COLEGIO ESTADUAL

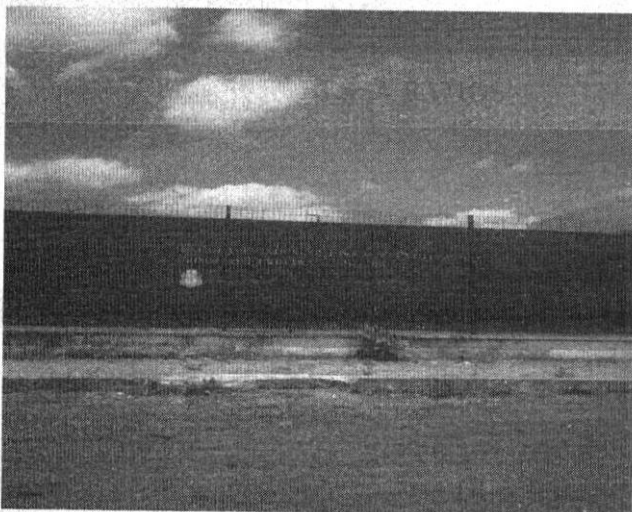


CEI MARIA BESSA RAMOS

EEF PE ANTONIO CRISTOMO DO VALE



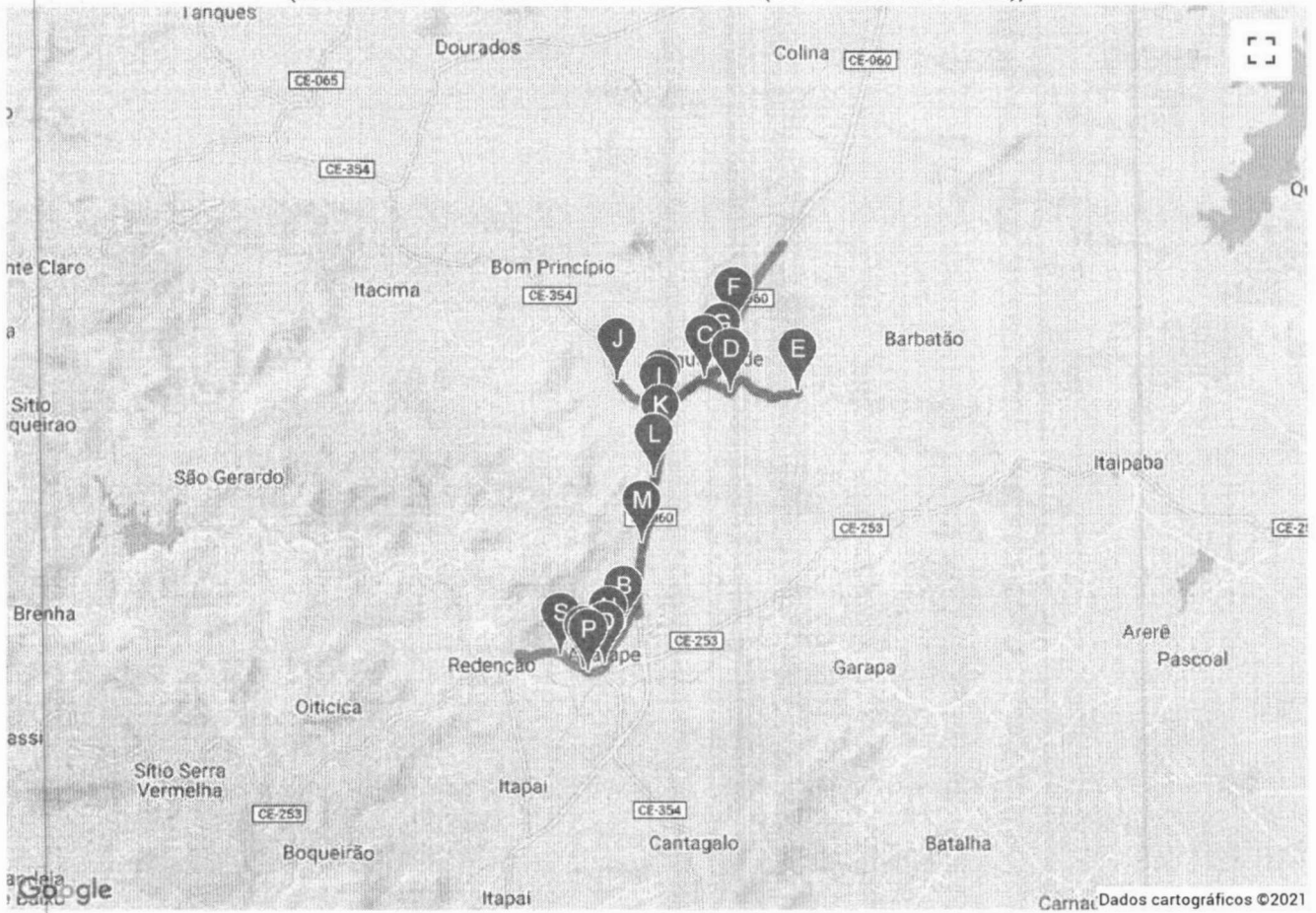
FIM DA ROTA ESCOLA ESTADUAL ADOLFO



X



G&T CONTROLLER
(GARAGEM - MORENO- ADOLFO FERREIRA)
(GARAGEM - MORENO- ADOLFO FERREIRA (MOTORISTA SALVINO))



J



(GARAGEM- ACENTAMENTO-TANQUES JOSE NEVES DE CASTRO)
(GARAGEM- ACENTAMENTO-TANQUES JOSE NEVES DE CASTRO (MOTORISTA CELHO))

LATITUDE	LONGITUDE	NOME DA PARADA	DISTANCIA
-4.2162976	-38.7000631	INICIO DA ROTA	1,1 km
-4.2103651	-38.6974192	DESVIO	1,4 km
-4.2076695	-38.6853658	ACENTAMENTO	3,5 km
-4.1918481	-38.695307	DESVIO	1,8 km
-4.2070525	-38.6979616	DESVIO	0,8 km
-4.2069128	-38.7047367	TANQUES	2,4 km
-4.2194753	-38.7035289	DESVIO	0,2 km
-4.2179519	-38.7041239	EEF FRANCISCO ROCHA RAMOS	0,3 km
-4.2160149	-38.7053967	CEI RAO DE LUZ	74 m
-4.2162636	-38.7060267	DESVIO	1,3 km
-4.2247094	-38.7095411	ESCOLA JOSE NEVES DE CASTRO	1 m

VIAGENS 4 X DISTANCIA(KM): 12.9 Km DISTÂNCIA TOTAL(KM): 51.5 Km

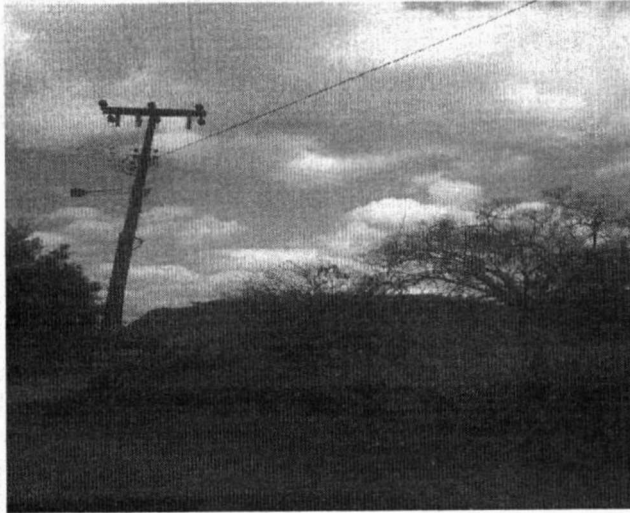
INICIO DA ROTA



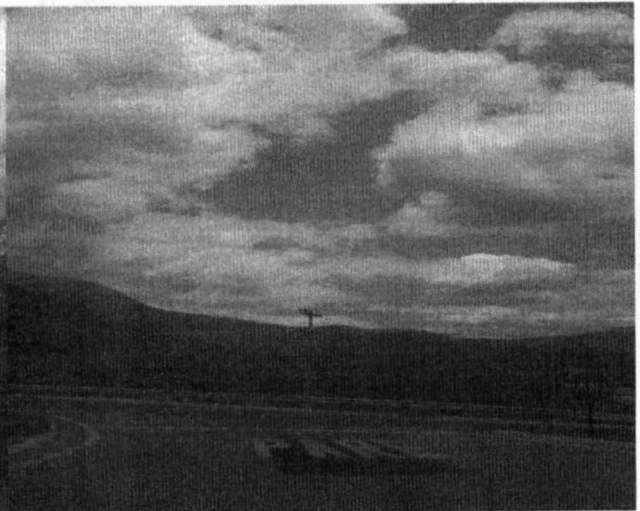
DESVIO



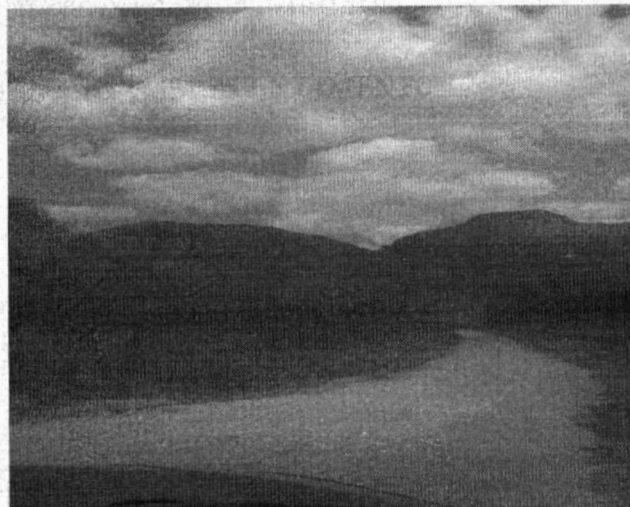
ACENTAMENTO



DESVIO



DESVIO



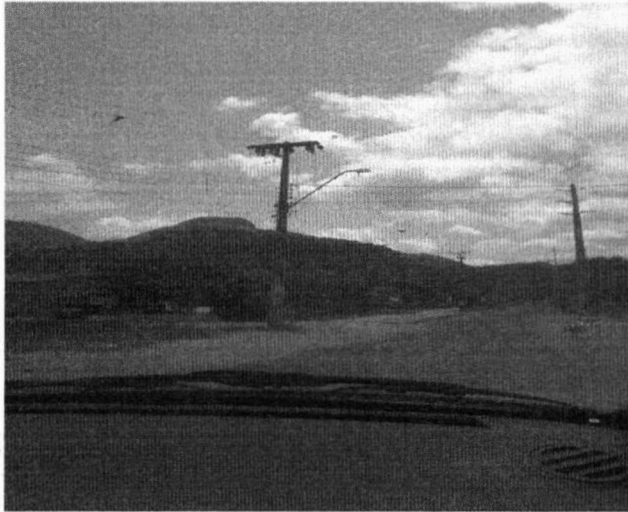
TANQUES



X

DESVIO

EEF FRANCISCO ROCHA RAMOS

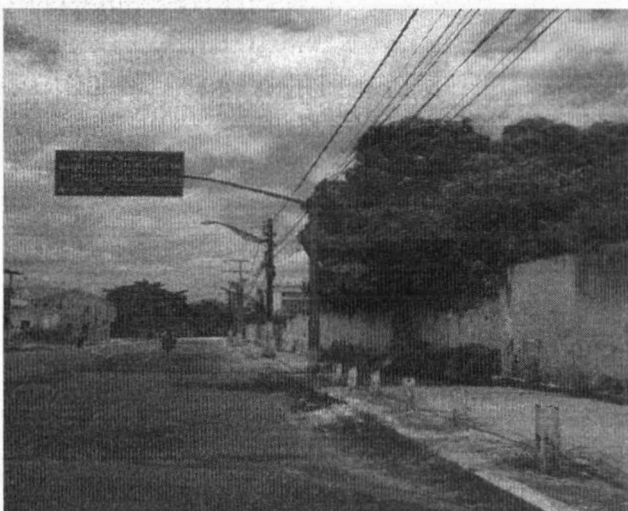


CEI RAI0 DE LUZ

DESVIO



ESCOLA JOSE NEVES DE CASTRO



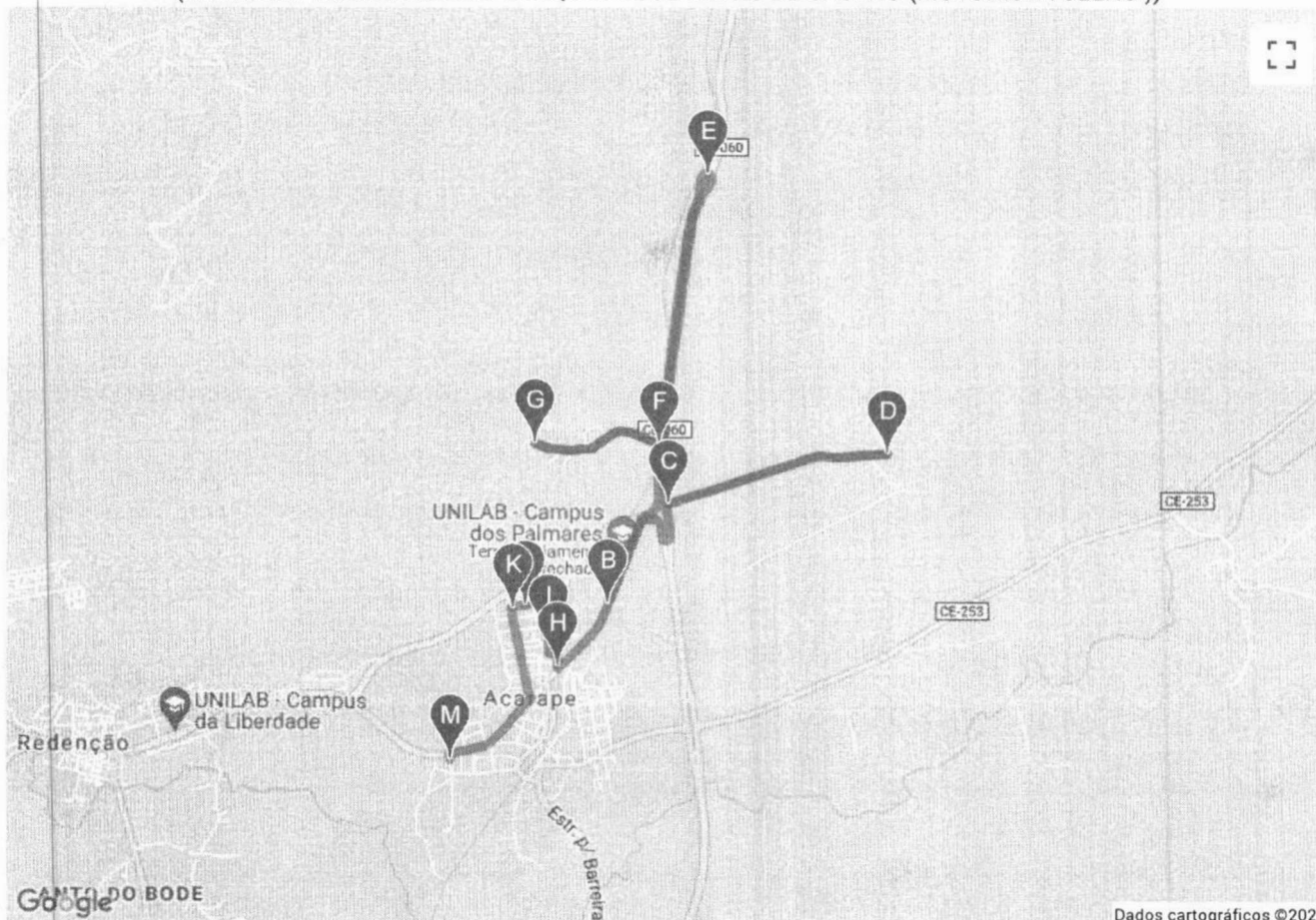
X



G&T CONTROLLER

(GARAGEM- ACENTAMENTO-TANQUES JOSE NEVES DE CASTRO)

(GARAGEM- ACENTAMENTO-TANQUES JOSE NEVES DE CASTRO (MOTORISTA CELHO))



X



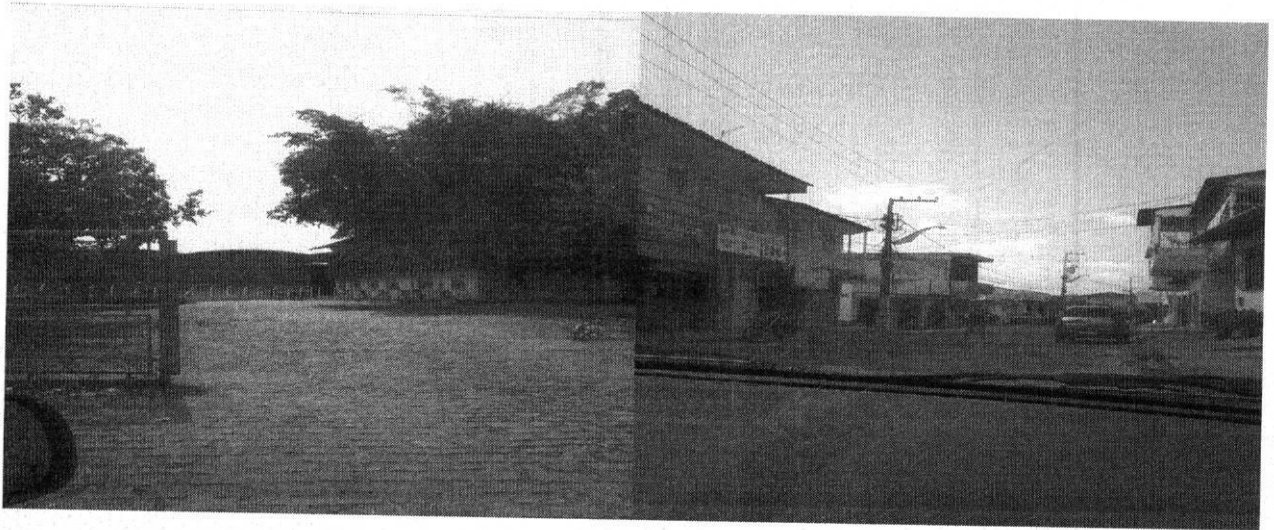
(GARAGEM- AÇUDE DO MAMOEIRO -JOSE NEVES DE CASTRO MANHÃ)
(GARAGEM- AÇUDE DO MAMOEIRO -JOSE NEVES DE CASTRO MANHÃ (MOTORISTA FELIX))

LATITUDE	LONGITUDE	NOME DA PARADA	DISTANCIA
-4.2157866	-38.7006157	INÍCIO DA ROTA	0,7 km
-4.2207668	-38.7040121	DESVIO	0,8 km
-4.226356	-38.7043686	DESVIO	2,3 km
-4.243319	-38.7027219	DESVIO	1,5 km
-4.2534134	-38.6948062	DESVIO	1,3 km
-4.2461684	-38.6872068	PARADAS	2,9 km
-4.2627271	-38.6867017	PARADA	0,4 km
-4.2661052	-38.6856962	DESVIO	0,2 km
-4.2671172	-38.684917	CEI CANTA GALO	2,6 km
-4.2852891	-38.6804511	DESVIO	0,6 km
-4.2859203	-38.6858614	PARADA	1,9 km
-4.2741495	-38.6841826	PARADA	5,3 km
-4.2381406	-38.7019579	DESVIO	0,9 km
-4.2350697	-38.7067861	APARADA	2,7 km
-4.2242078	-38.7040989	PARADA	0,6 km
-4.2254524	-38.7086743	CEI BESSA RAMOS	0,1 km
-4.2249854	-38.7094008	ESCOLA JOSE NEVES DE CASTRO	1 m

VIAGENS 2 X DISTANCIA(KM): 24.8 Km DISTÂNCIA TOTAL(KM): 49.6 Km

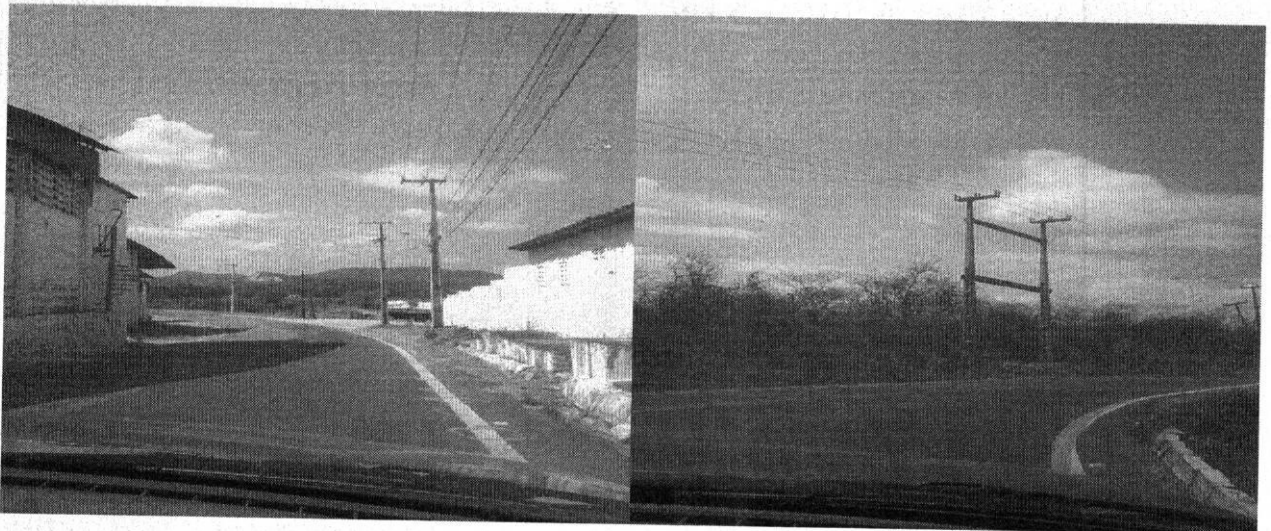
INICIO DA ROTA

DESVIO



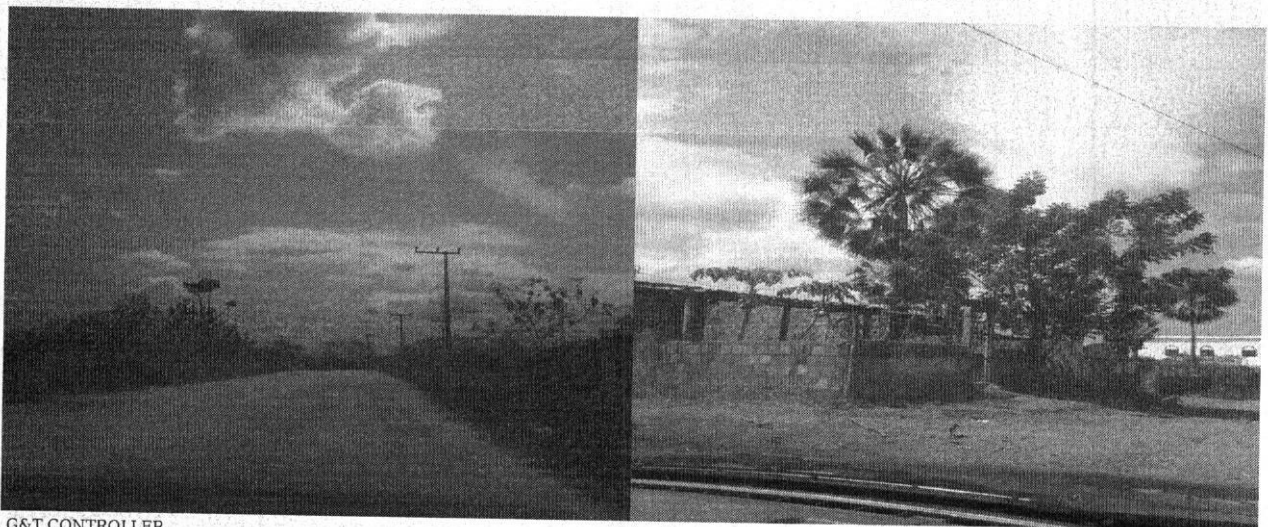
DESVIO

DESVIO



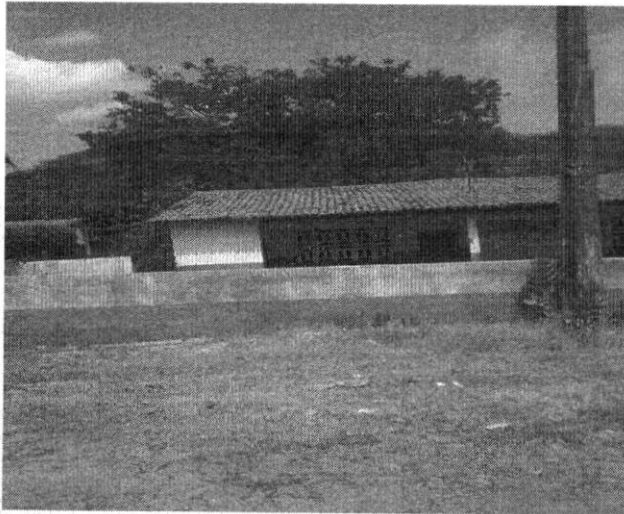
DESVIO

PARADAS

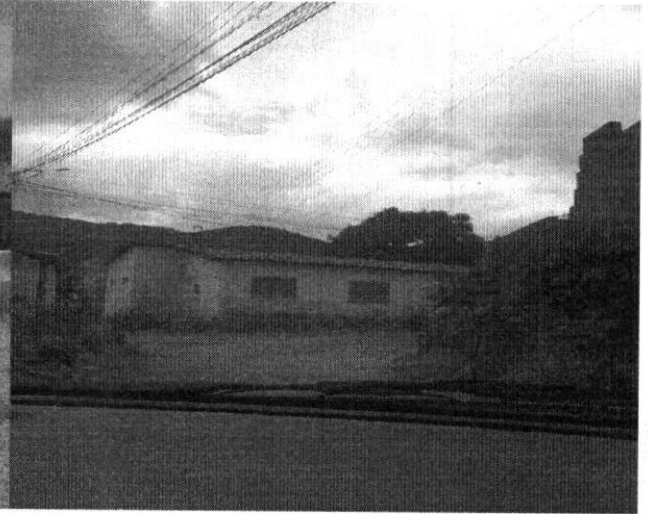


X

PARADA



DESVIO



CEI CANTA GALO



DESVIO



PARADA



PARADA



X

DESVIO



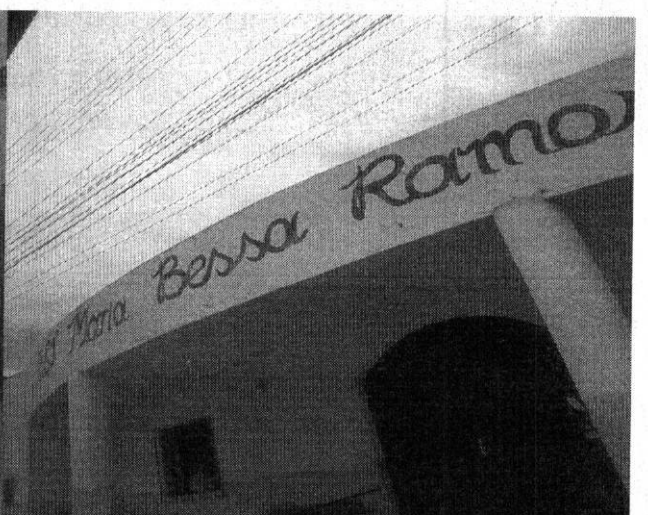
APARADA



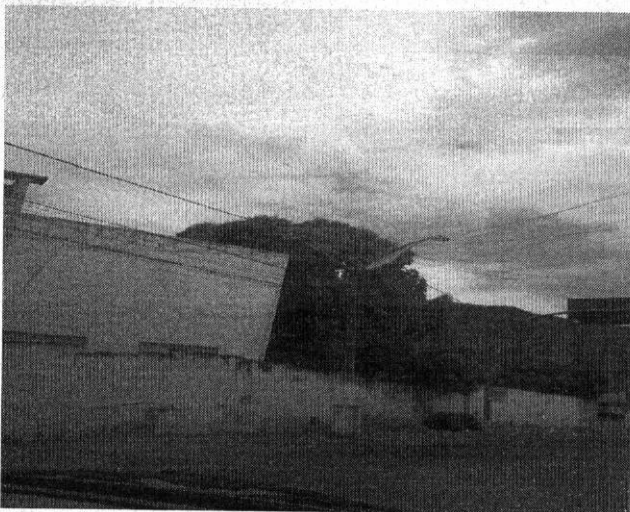
PARADA



CEI BESSA RAMOS



ESCOLA JOSE NEVES DE CASTRO



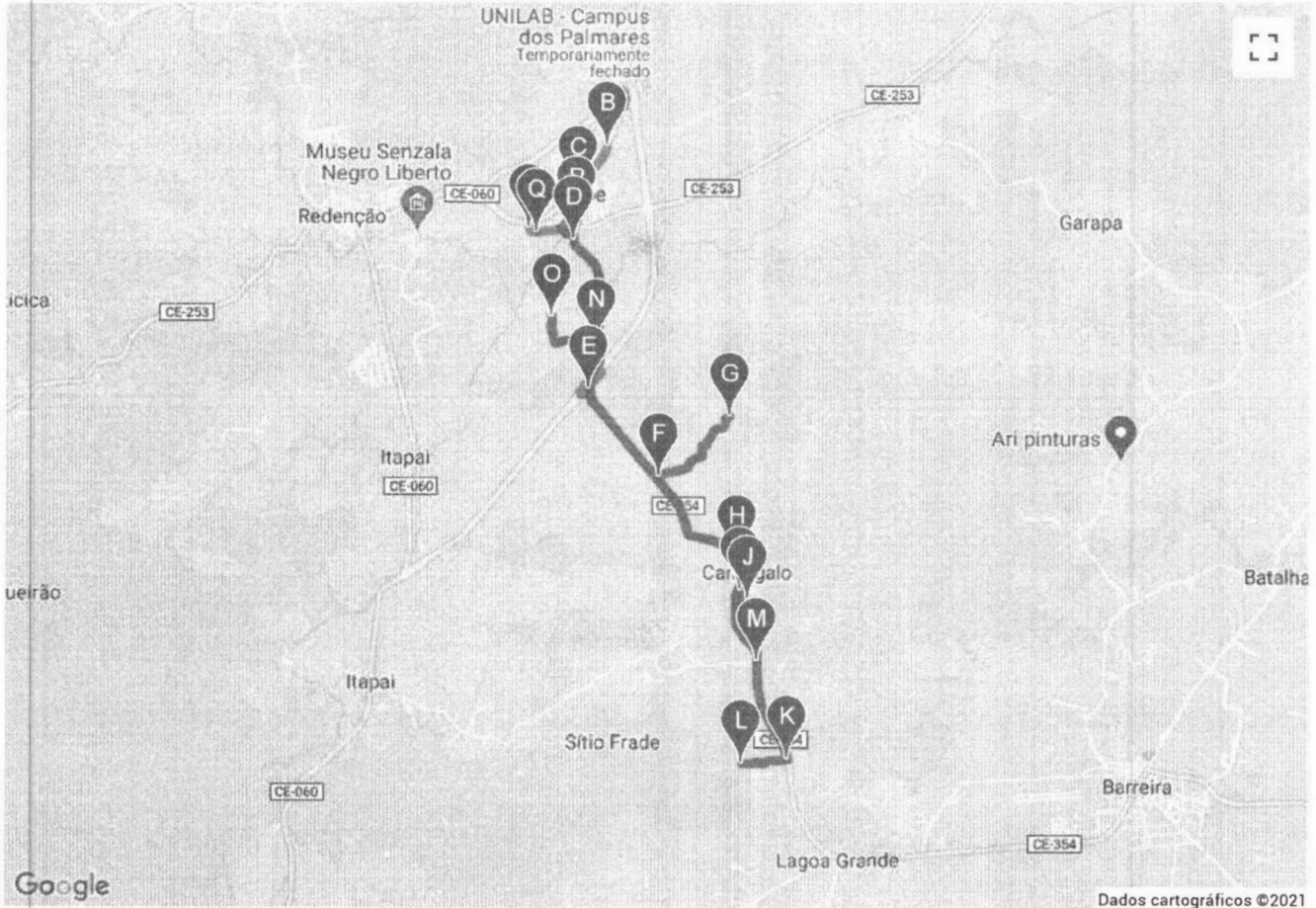
X



G&T CONTROLLER

(GARAGEM- AÇUDE DO MAMOEIRO - JOSE NEVES DE CASTRO MANHÃ)

(GARAGEM- AÇUDE DO MAMOEIRO - JOSE NEVES DE CASTRO MANHÃ (MOTORISTA FELIX))



X



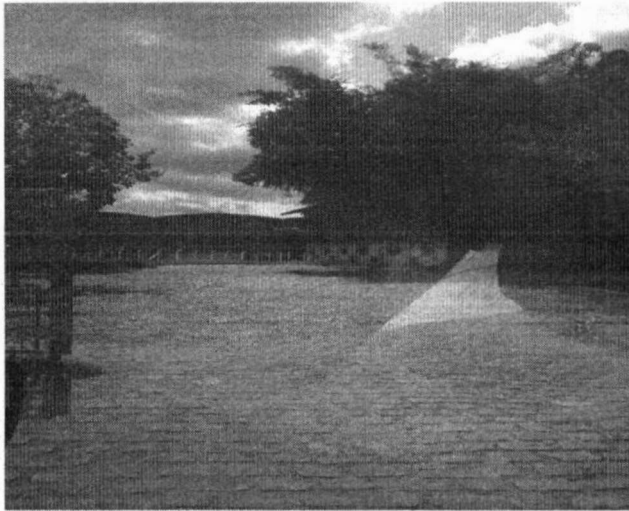
(GARAGEM - ADOLFO FERREIRA)
(GARAGEM - ADOLFO FERREIRA(MOTORISTA SERGIO))

LATITUDE	LONGITUDE	NOME DA PARADA	DISTANCIA
-4.2135331	-38.7007371	INICIO DA ROTA	0,9 km
-4.2205081	-38.704187	DESVIO	0,8 km
-4.225407	-38.7058287	DESVIO	2,1 km
-4.2420698	-38.7026602	DESVIO	4,8 km
-4.274619	-38.6841206	DESVIO	0,7 km
-4.2748263	-38.6905484	PARADA	2,2 km
-4.2864192	-38.6802643	PARADA	1,3 km
-4.2758231	-38.6839734	PARADA	1,0 km
-4.2679279	-38.6862214	PARADA	0,8 km
-4.2610989	-38.6870249	ESCOLA ANA CLETA	3,3 km
-4.2413179	-38.7023842	DESVIO	1,9 km
-4.2258741	-38.7048579	PARADA ESCOLA ESTADUAL	0,4 km
-4.2253252	-38.7086073	CEI MARIA BESSA RAMOS	1,0 km
-4.2201448	-38.7056682	ESCOLA ANTONIO CRISOSTIMO DO VALE	4,0 km
-4.2219401	-38.7151145	FIM DA ROTA ADOLFO FERREIRA SOUSA	1 m

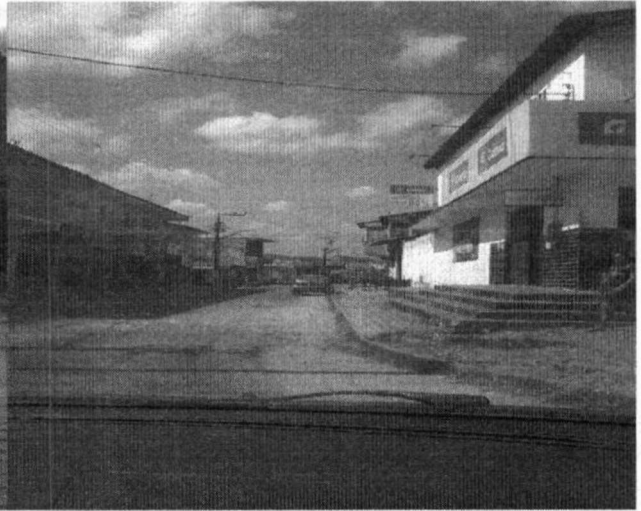
VIAGENS 4 X DISTANCIA(KM): 25.2 Km DISTÂNCIA TOTAL(KM): 100.8 Km

X

INICIO DA ROTA



DESVIO



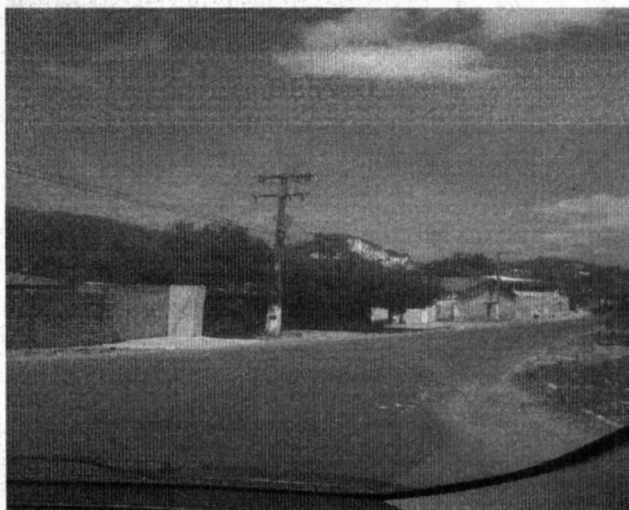
DESVIO



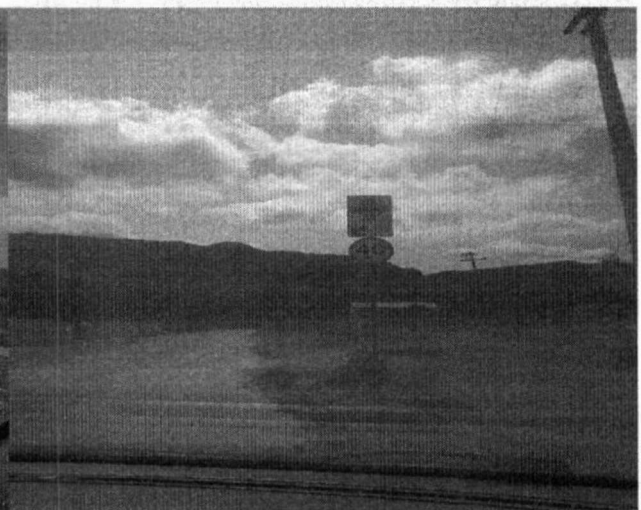
DESVIO



DESVIO



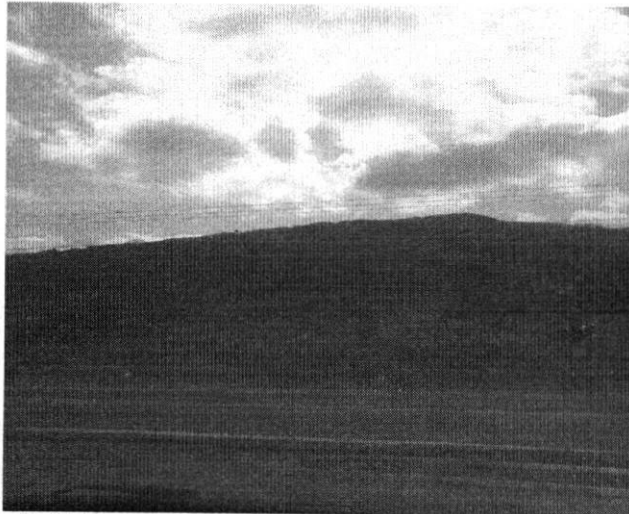
PARADA



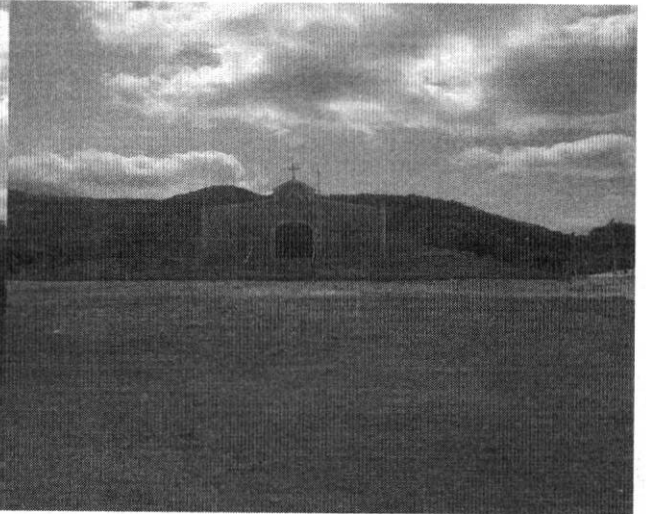
2



PARADA



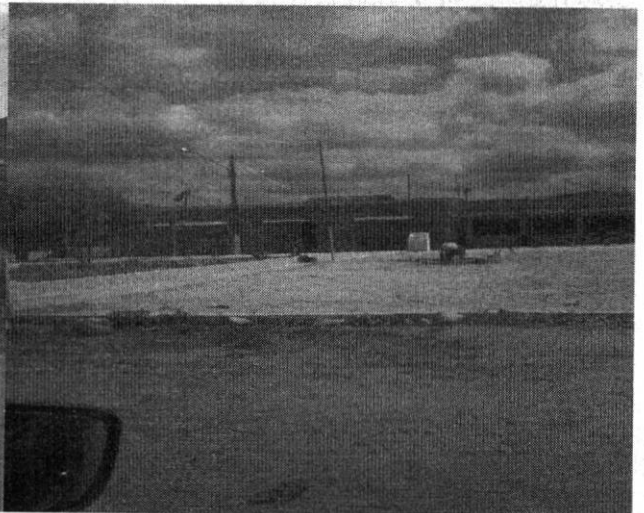
PARADA



PARADA



ESCOLA ANA CLETA



DESVIO



PARADA ESCOLA ESTADUAL

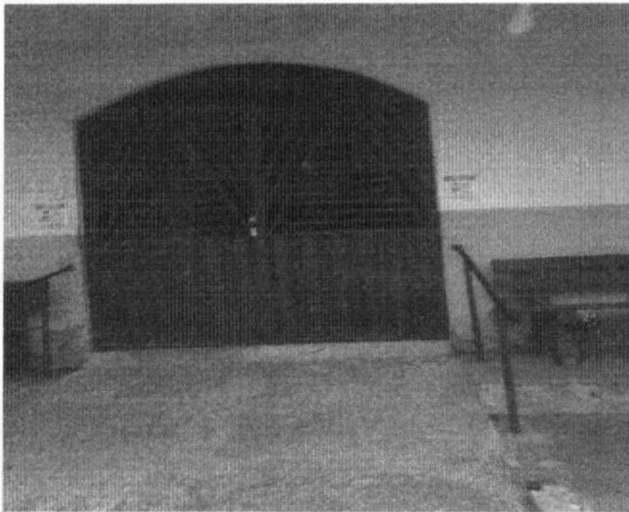


X

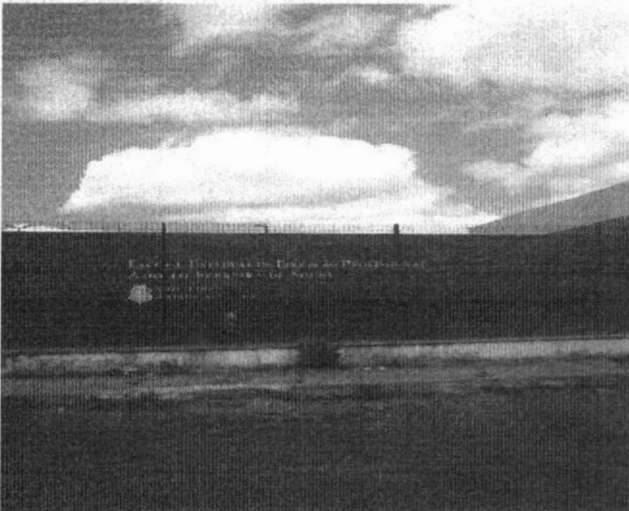


CEI MARIA BESSA RAMOS

ESCOLA ANTONIO CRISOSTIMO DO VALE



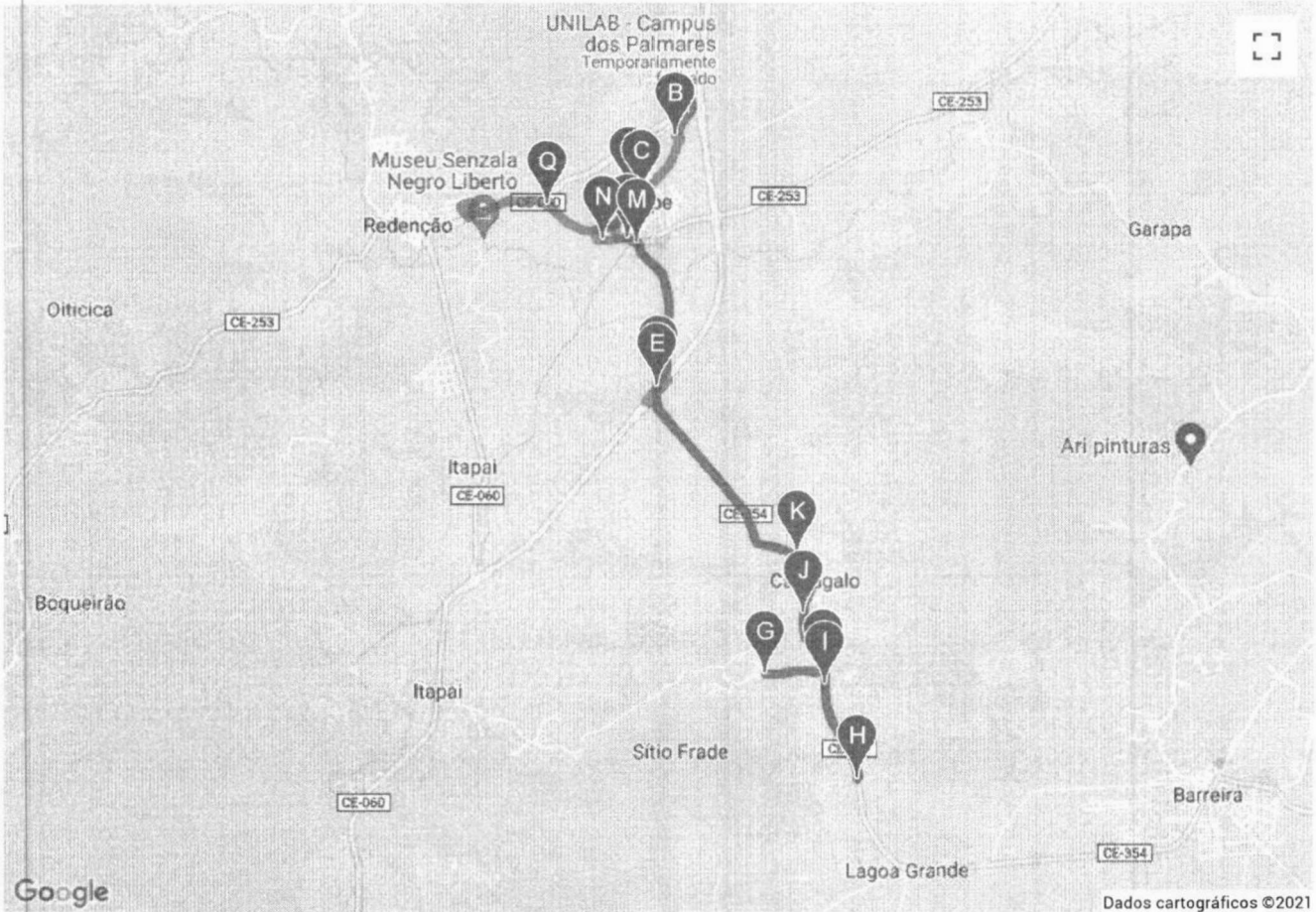
FIM DA ROTA ADOLFO FERREIRA SOUSA



X



G&T CONTROLLER
(GARAGEM - ADOLFO FERREIRA)
(GARAGEM - ADOLFO FERREIRA(MOTORISTA SERGIO))



X

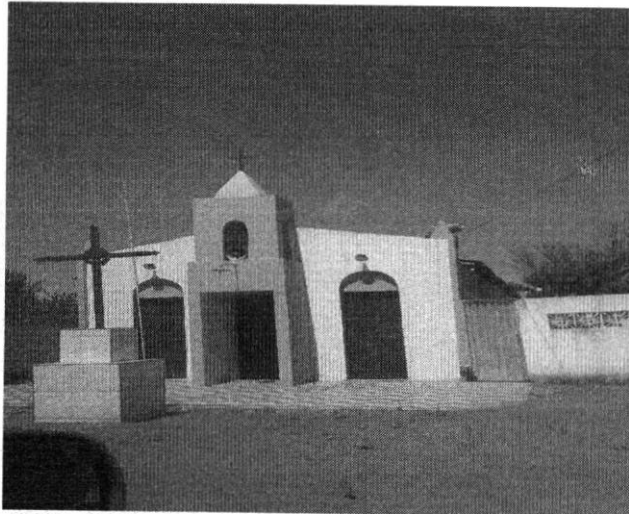


(AMARGOSO - EEI JOSE BRIGIDO COSTA)
(AMARGOSO - EEI JOSE BRIGIDO COSTAFABINHO)

LATITUDE	LONGITUDE	NOME DA PARADA	DISTANCIA
-4.2175171	-38.6022221	INÍCIO DA ROTA	1,7 km
-4.2040136	-38.5971074	DESVIO	1,0 km
-4.2026634	-38.6052556	PARADA	1,0 km
-4.204175	-38.5970759	DESVIO	1,8 km
-4.2183203	-38.6026375	PARADA E DESVIO	2,0 km
-4.2307547	-38.5902922	PARADA	1,0 km
-4.2238637	-38.5964379	PARADA	1,0 km
-4.2184263	-38.6026574	DESVIO	3,2 km
-4.2410949	-38.6171577	PARADA	1,8 km
-4.2258037	-38.6123271	DESVIO	2,5 km
-4.2332355	-38.6320361	EEI JOSE BRIGIDO COSTA	1,3 km
-4.2433546	-38.6321491	FIM DA ROTA	1 m

VIAGENS 4 X DISTANCIA(KM): 18.3 Km DISTÂNCIA TOTAL(KM): 73.2 Km

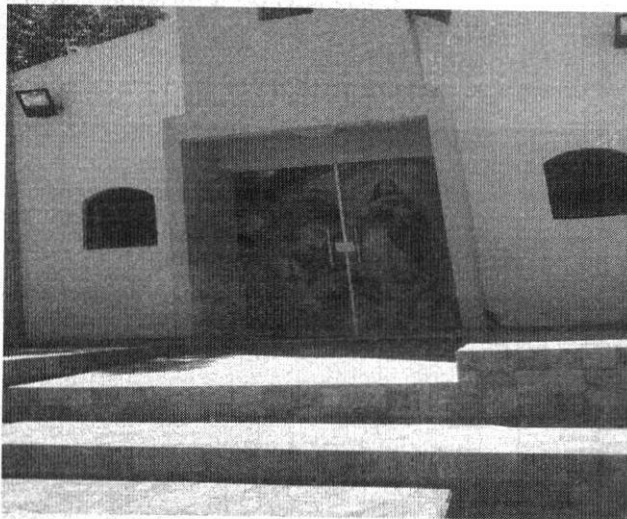
INICIO DA ROTA



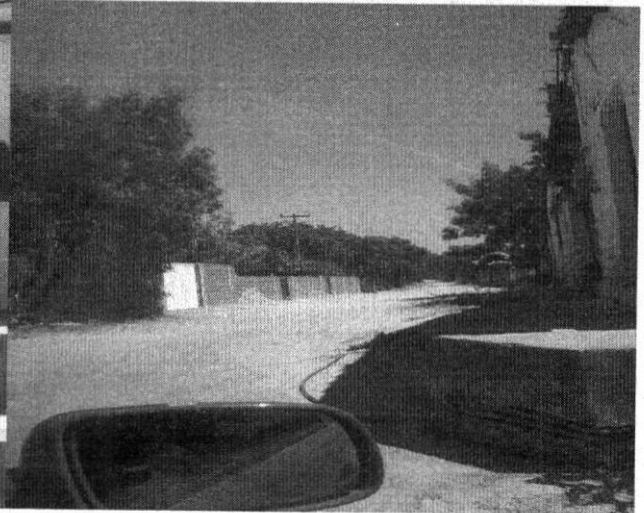
DESVIO



PARADA



DESVIO



PARADA E DESVIO



PARADA



X



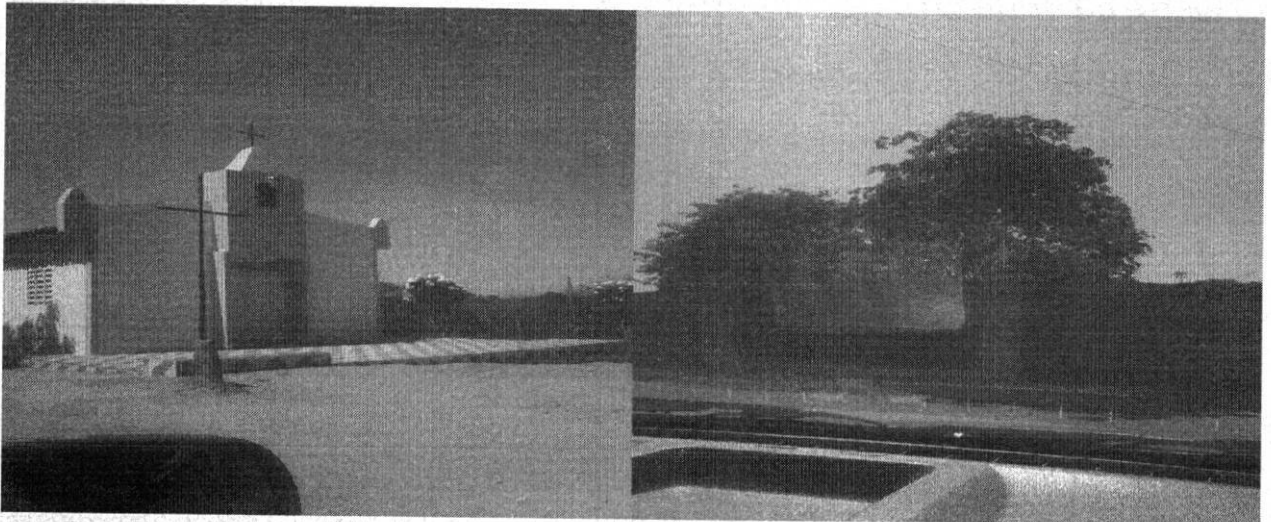
PARADA

DESVIO



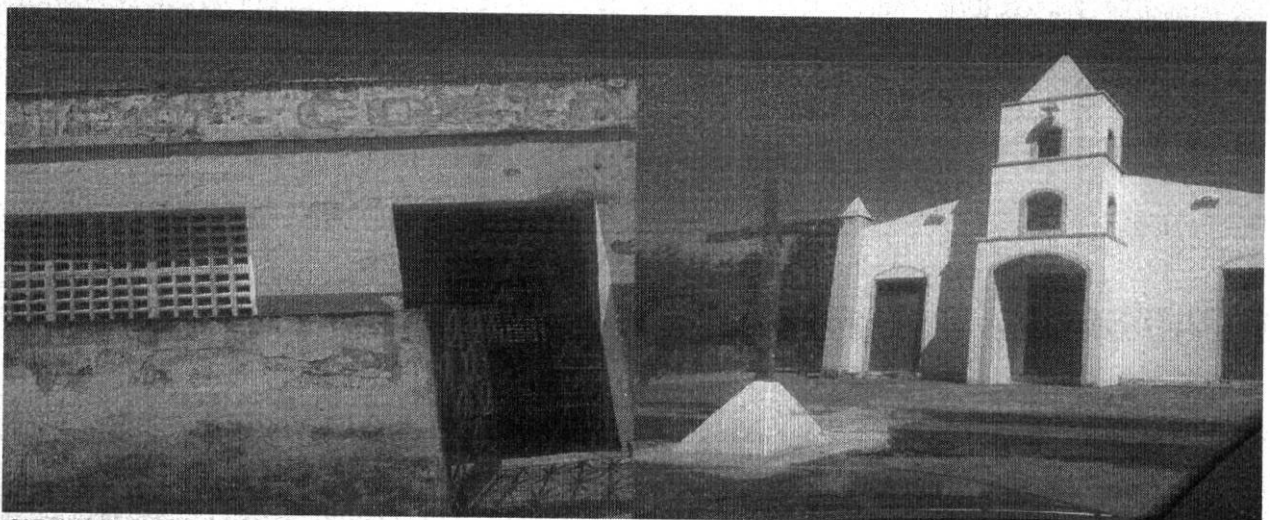
PARADA

DESVIO



EEI JOSE BRIGIDO COSTA

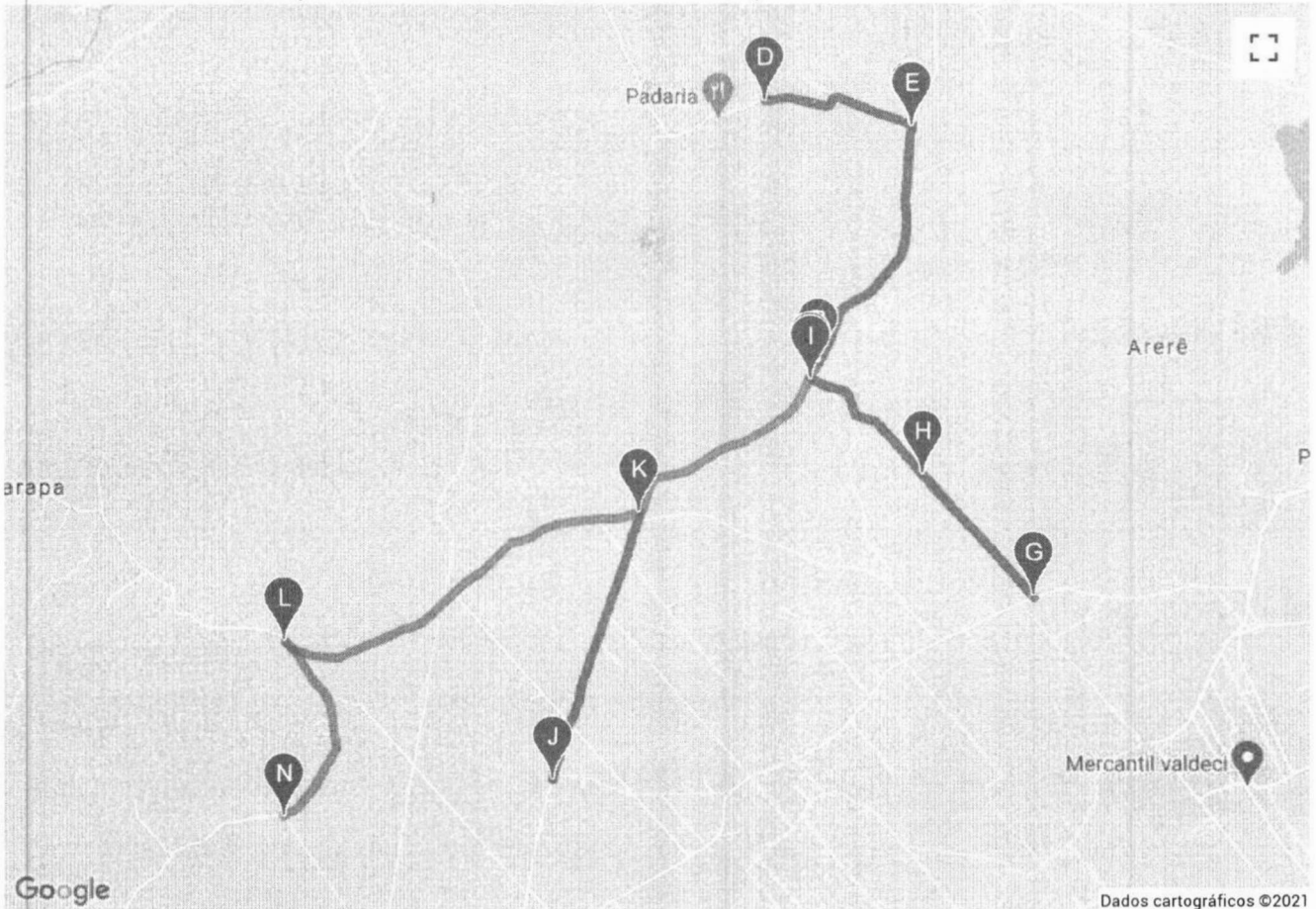
FIM DA ROTA



2



G&T CONTROLLER
(AMARGOSO - EEI JOSE BRIGIDO COSTA)
(AMARGOSO - EEI JOSE BRIGIDO COSTA (MOTORISTA FABINHO))



X



ANEXO II - MODELO DE PROPOSTA DE PREÇOS

NÚMERO DO PREGÃO: <<<N DO PROCESSO>>>

OBJETO: <<<OBJETO>>>

OBSERVAÇÃO: Ao elaborar a proposta de preços, o licitante deverá observar as especificações e detalhamentos dos itens constantes do termo de referência. Havendo divergência entre o detalhamento do Termo de Referência e das especificações constante do sistema BLL Compras, prevalecerá às especificações presentes no Termo de referência anexo I deste edital.

Declaramos, para todos os fins de direito, que nos preços ofertados estão incluídas todas as despesas incidentes sobre o fornecimento referente a tributos, encargos sociais e demais ônus atinentes à execução do objeto desta licitação.

Declaramos, para todos os fins de direito, que cumprimos plenamente os requisitos de habilitação e que nossa Carta Proposta está em conformidade com as exigências do instrumento convocatório (edital).

Identificação:

Endereço:

CNPJ nº

Representante Legal:

CPF nº

E-mail:

Validade da Proposta:

_____/____/____ de ____ de ____
Identificação

X